

TRAIN

- Kashiwara City is served by three railroad lines. (Kintetsu Osaka Line - Kintetsu Domyoji Line - JR Kansai Main Line)
- The city has three JR stations and seven Kintetsu stations, which is very convenient for the area of the city.
- The city boasts the No. 1 bridge over the Kintetsu Domyoji Line with its beautiful brick abutments and the No. 4 Yamatogawa River Bridge, which is a rare two-story structure.



Kintetsu Domyoji Line No. 1 overpass



No. 4 Yamatogawa River Railway Bridge

Where is Kashiwara City?



Access from major stations

Namba	Osaka	Nara	Shin osaka
Kintetsu Osaka-Namba St.	JR Osaka St.	JR Nara St.	JR Shin-Osaka St.
Kintetsu Nara Line 10min	JR Osaka Loop Line 23min		JR Osaka East Line 35min
Kintetsu Fuse St.	JR Tennoji St.	JR Yamatoji Line 28min	JR Kyuhoji St.
Kintetsu Osaka Line 18min	JR Yamatoji Line 14min		JR Yamatoji Line 7min
Kintetsu Ando St.		JR Kashiwara St.	

The aroma of grapes,
The romance of the earth,
The warmth of the people.

KASHIWARA PRIDE

Kashiwara, with its rich nature and history, is full of "pride" that makes you want to talk about it.

Walk, see, taste - you will fall in love with Kashiwara!

Kashiwara Grape



Osaka Prefecture is one of the leading grape growing areas in Japan, and Kashiwara City is the driving force behind this. Grapes vary in cultivation method, variety, and taste throughout the country. Please try Kashiwara grapes.

Grape varieties grown in Kashiwara



Delaware

Small and sweet, it is famous as a "seedless grape". It is the main grape variety that accounts for more than 80% of all grapes in Kashiwara City.



Pione

It is a large, black grape variety with a single parent, the Kyoho grape. The technology of seedless cultivation has been established, and it is now produced all over Japan. It has the best taste and volume!



Muscat Bailey A

Medium-sized grapes with a good balance of acidity and sweetness. It is also suitable for sightseeing grape picking and is used as a raw material for red wine.



Shine Muscat

This variety is now attracting the most attention as a high quality grape that can be eaten with the skin intact. It is a top-quality grape with low acidity and the aroma of Muscat.



Niji no Shizuku

Osaka's original variety (Ponta), nicknamed "rainbow drop". Its color varies like a rainbow depending on the harvest time and cultivation method, and its mellow aroma and rich sweetness are appealing.

In addition to these five varieties, Kashiwara City produces more than 30 varieties of grapes! Please come to Kashiwara City to find your favorite grape!

For more information, scan here!



You can New discover and Rediscover the "WA" of Kashiwara! KASHIWARA 4 Stories

The No.1 number of municipalities in the country?

Kashiwara&Kofun



Kashiwara boasts one of the largest number of ancient tombs in Japan for a municipality. Kofun tumuli dating from the 4th to 7th centuries are scattered throughout the city, in particular, the line-engraving wall paintings of the "Takaida Yokonana Group" are famous throughout the country. Some of the excavated artifacts have been designated as national treasures or important cultural properties, indicating that Kashiwara is an extremely important region in Japanese history.

It was one of the most densely populated temple areas in the country!

Kashiwara&Temple



Asuka-Nara Period, Kashiwara prospered as the gateway to the capital of Nara, Kashiwara flourished as the capital to the capital of Nara and was one of the most densely populated temple areas in Japan, lined with Kawachi Kokubunji Temple and Kokubun Niji Temple. In particular, it is known that a Buddhist Statue enshrined at Chishikiji Temple, one of the "Six Temples of Kawachi," inspired Emperor Shomu to build the Great Buddha at Todaiji Temple.

First and oldest, Kashiwara is the beginning?

Kashiwara&Railroad



In 1889, Osaka Railway Company, the predecessor of JR West, opened for business. Kashiwara Station was one of the first stations in Osaka Prefecture to be built on the line, and was a busy arrival and departure station. In 1898, Kintetsu's oldest line, the Domyoji Line, opened. Today, Kashiwara has 10 stations and is a popular railroad town.

Before prewar, it was No.1 in the nation producer!

Kashiwara&Grape



The cultivation of grapes began in Kashiwara about 300 years ago. Between 1928 and 1935, it developed into the nation's number one grape growing region. Currently, small, sweet Delaware grapes and hearty Pione grapes are popular. Grape picking and wine making also flourish, and Kashiwara is one of the leading grape growing towns in Japan.

Japan Heritage, Tatsuta Kodo and Kamenose



Kamenose, a natural barrier on the border between Osaka and Nara prefectures. This place marks the history of coexistence and struggle against landslides.

Projection Mapping Japan Heritage "Tatsuta Kodo and Kamenose" Journey of Light

A projection mapping show featuring the Kamenose Tunnel (former Osaka Railway Kamenose Tunnel) is currently being shown. This tunnel is a "phantom tunnel" that was discovered by chance after it was buried by a landslide. Please come to Kamenose for a spectacular visual experience.

What is "Japan Heritage" ?

The Agency for Cultural Affairs recognizes stories that tell of the culture and traditions of Japan through the historical charm and characteristics of a region. "The Tatsuta Kodo" is an important route connecting Osaka and Nara, and the history of the battle against the landslide at "Kamenose" were selected as Japan Heritage sites.



Japan Heritage Recommended Product "No Landslide Anymore!" Brand

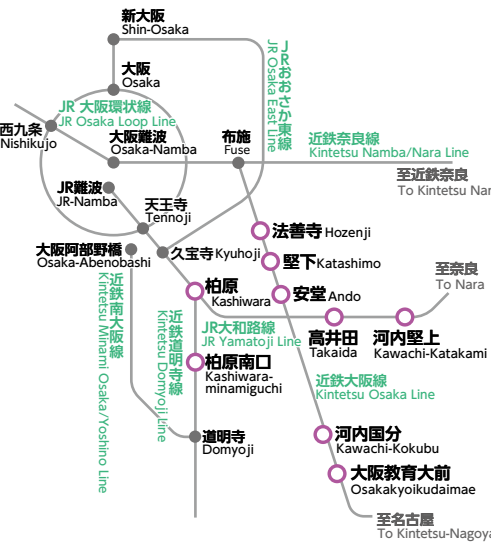
Taking advantage of various local resources that have been loved since ancient times, Japan Heritage Recommended Product "No Landslide Anymore!" and certified as a brand, We will continue to promote the charm of the region.



<https://kamenose.jp> →



ACCESS



Bicycle rental

For those who want to explore Kashiwara by bicycle! Bicycle rentals are available at bicycle parking lots at six stations in the city! →



WA! KASHIWARA PHOTO SPOT!

Historic site of Takaida Yokoana Park



Free, close-up view of the line engraved mural! (Reproduction)

Ryuosha Shrine's Instagrammable spots



Katsuragi Shugen, another Japan Heritage Site in Kashiwara City! Its final location!

Cherry blossoms and townscape seen from Satoyama Park of The Tatsuta Kodo



You can see cherry blossoms and a spectacular view of the town from Satoyama Park (Smile Land) of The Tatsuta Kodo!

GUNDAM Manhole



Take a walk on the waterways in town where you can feel the quiet time.

It's near JR Kashiwara St. and Kintetsu Kawachi-Kokubu St.!



Gentle water flow Aqua road



Drain Tunnel



Adult social tours available through Kamenose Infratourism Guided Tours!

Matabei's Weeping cherry blossoms

Weeping cherry blossoms bloom next to the Goto Matabei monument in Tamateyama Park.



The night view of the Osaka Plain can be seen from here.

Night view from Mt.Takao



Various events will be held on the riverbank in front of City Hall.



Events along the Yamatogawa River

Red Tamate Bridge



Kusu tree at Iwa Shrine

The camphor tree of the Iwa Shrine is a huge tree with the power of nature.



information

Check here for the latest event information and more.



Kashiwara WEB site
<https://www.city.kashiwara.lg.jp>



Facebook
@kashiwara.city



X
@CityKashiwara



Instagram
@kashiwara_official



KASHIWARA MAP

Let's GO!!

Look here! Come here! Kashiwara City

1 Historic site of Takaida Yokoana Park



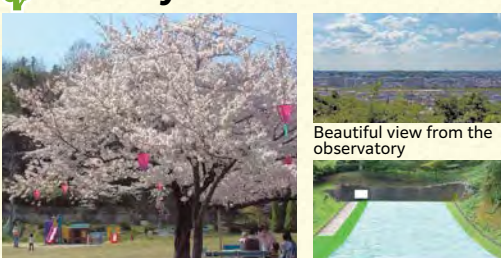
A group of caves carved into tuff from the mid-6th century to the 7th century. Approximately 160 caves have been confirmed as national historic sites, and the carved murals of boats, people, birds, and more are worth a look. You can enter the caves on special public tours in spring and autumn, or by making a reservation in advance for a group tour (5 or more people).

3 Matsuokayama Kofun (The historic site)



The burial mound dates back to the first half of the 4th century, and from the surrounding area, a 7th-century personage, King Funashi's Later Grave (National Treasure), a bronze mirror (Important Cultural Property), and Jasper stoneware (Important Cultural Property) have been unearthed.

5 Tamateyama Park



Located on the former site of the much-loved Kintetsu Tamateyama Amusement Park, this park is blessed with nature. The park also has a variety of playground equipment for children to enjoy.

2 Yamatogawa River Flood Control Memorial Park



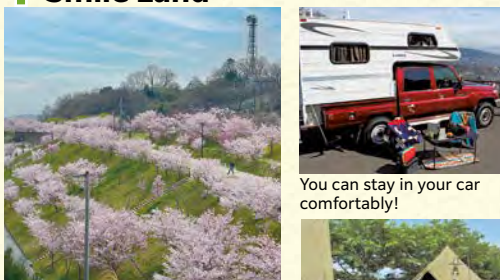
The Yamatogawa River used to flood frequently, but was replaced in 1704 and became the current river. A bronze statue of Naka Jinbei, who was involved in the replacement work, stands at the starting point of the replacement work, reminding us of people's struggle against floods.

4 Kashiwara Historical Museum



The museum exhibits many archaeological materials, ancient documents, and drawings related to Kashiwara, as well as artifacts excavated from ancient tombs and ruins in the city. The museum is a constant source of visitors from outside the city and even abroad, as it allows visitors to experience the deep history of Kashiwara.

6 Satoyama Park of The Tatsuta Kodo Smile Land



A nature-rich recreation area with over 1,000 flowering trees, including cherry, plum, and peach trees. The panoramic view of the Yamato Plain from the observatory is also not to be missed.

9 Giant signboard for "Kashiwara Grapes"



A huge signboard displaying grapes, a specialty of Kashiwara. The steep slope leading up to the signboard is known among cyclists as "Budou-zaka" (Grape Hill), and is a popular challenge.

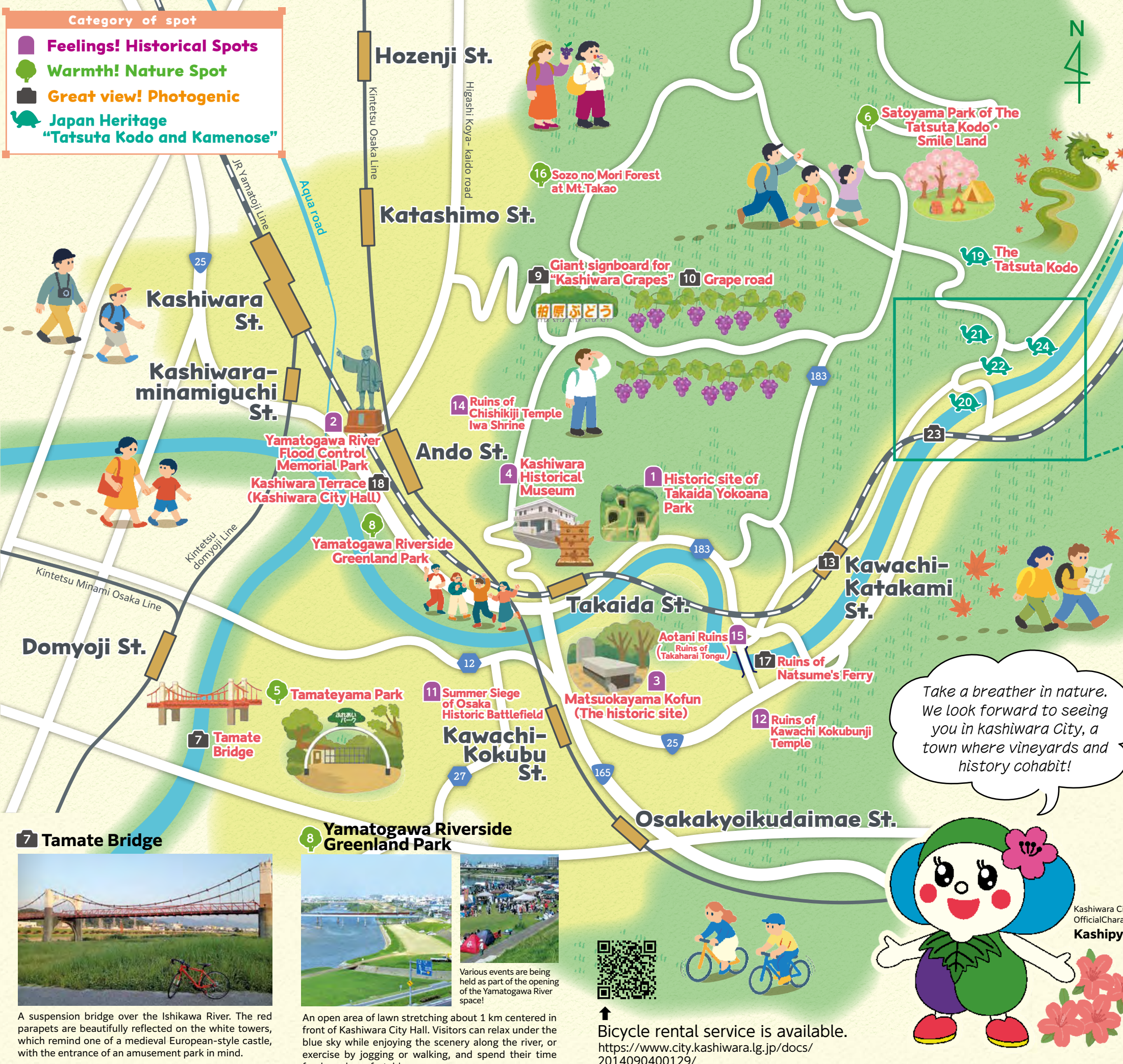
14 Ruins of Chishikiji Temple, Iwa Shrine



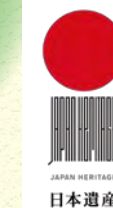
Chishikiji Temple is said to have had a central hall and a 50-meter-high five-story pagoda on the east and west sides. The foundation stone of the east pagoda remains in the precincts of Iwa Shrine, where it is protected along with a magnificent camphor tree (a natural monument of Osaka Prefecture) said to be about 800 years old.

Category of spot

- Feelings! Historical Spots
- Warmth! Nature Spot
- Great view! Photogenic
- Japan Heritage "Tatsuta Kodo and Kamenose"



Japan Heritage "Tatsuta Kodo and Kamenose"



What Historical Remains Convey to the Future

Take a breather in nature. We look forward to seeing you in Kashiwara City, a town where vineyards and history cohabit!

19 The Tatsuta Kodo



The Tatsuta Kodo was established in the Nara period (710-794) as an official road connecting Heijo-kyo Capital, Kawachi, and Namba. It was used as a gateway for the emperor's excursions and for Japanese envoys to the Tang Dynasty and the Silla Kingdom to enter Yamato.

20 The Kameiwa



A gorge in the Yamatogawa River, is located on the border of Osaka and Nara. It is said that the name "Kamenose" comes from the giant stone here that looks like a turtle.

21 The Kamenose Landslide History Reference Room



There are various exhibits on the history of the Kamenose landslide, the mechanism of the landslide, and the details of the landslide prevention work, allowing children and adults alike to learn.

22 Kamenose Tunnel



The Kamenose Tunnel (former Osaka Railway Kamenose Tunnel) was buried underground by a massive landslide that occurred between 1931 and 1932. However, it was discovered by chance after a lapse of about 80 years during the course of landslide countermeasure work.

Kashiwara Model Course Whether walking or cycling.

- 1 JR Kashiwara St.
- 2 Yamatogawa River Flood Control Memorial Park
- 3 Kashiwara Historical Museum
- 4 Historic site of Takaida Yokoana Park
- 5 Ruins of Natsume's Ferry
- 6 JR Kawachi-Katakami St.
- 7 Kamenose Area

There are many other trails to choose from. Take a walk and create your own model course!

7 Tamate Bridge



A suspension bridge over the Ishikawa River. The red parapets are beautifully reflected on the white towers, which remind one of a medieval European-style castle, with the entrance of an amusement park in mind.

10 Grape road



Farmers line up to offer grape picking, a specialty of Kashiwara, in high season, the area is crowded with visitors.

15 Aotani Ruins (Ruins of Takaharai Tongu)



Takaharai-no-Tongu is a temporary palace of the emperor believed to have been located in the city of Kashiwara during the Nara period (710-794). It was used for lodging on the way between Heijo Palace and Naniwa Palace or Izumi Palace.

8 Yamatogawa Riverside Greenland Park



An open area of lawn stretching about 1 km centered in front of Kashiwara City Hall. Visitors can relax under the blue sky while enjoying the scenery along the river, or exercise by jogging or walking, and spend their time freely and comfortably.

11 Summer Siege of Osaka Historic Battlefield



During the Summer Siege of Osaka of 1615, fierce battles were fought between the Toyotomi and Tokugawa forces in Katayama, Tamate, Ishikawa, and other areas in the Kashiwara City area.

16 Sozo no Mori Forest at Mt. Takao



This is a hiking area where visitors can experience the blessings of the forest from season to season, as well as the romance of ancient times with ancient burial mounds and huge rocks. There are a variety of unique hiking courses, and near the top of the mountain you can enjoy a dynamic view of the Osaka Plain.



Bicycle rental service is available.
<https://www.city.kashiwara.lg.jp/docs/2014090400129/>

12 Ruins of Kawachi Kokubunji Temple

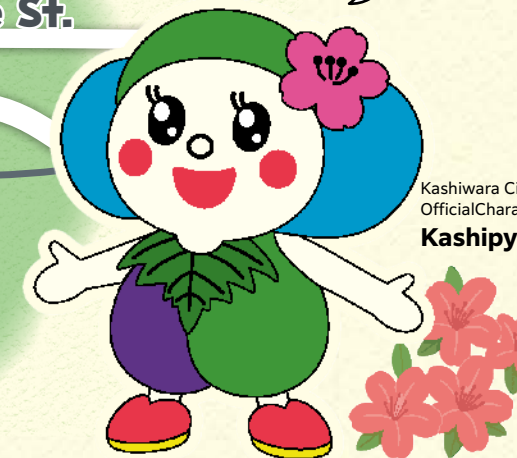


Kawachi Kokubunji Temple was one of the Kokubunji temples built throughout Japan under the direction of Emperor Shomu. The foundation stone of the pagoda remains, and from the size of the base, it is estimated to have been a huge seven-story pagoda over 50 meters high.

17 Ruins of Natsume's Ferry



A thrilling suspension bridge over the Yamatogawa River. In the old days, there were ferryboats here and teahouses where travelers took a rest. Why don't you cross this bridge and imagine the ancient landscape?



13 JR Kawachi-Katakami Station



The wooden station building has been in use since its opening in 1927. Cherry trees are planted on the platform and attract many visitors when they are in full bloom.

18 Kashiwara Terrace (Kashiwara City Hall)



The "KASHIWARA" monument welcomes visitors to this new spot for citizens to relax. On the other side of the river, you can see a part of the World Heritage Site "Moza and Furuichi Kofun Tumulus Group".

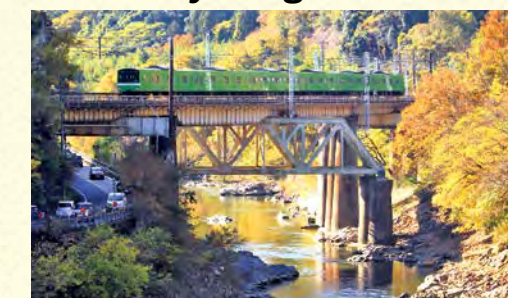
Discover the charm of Kamenose on a guided tour.

The former Osaka Railway Kamenose Tunnel, which was discovered during landslide countermeasure construction, is a constituent cultural asset of the "Tatsuta Kodo and Kamenose" Japan Heritage Site, and is now open for tours as part of the Kamenose Landslide Countermeasures Infrastructure Tourism Guided Tour. The tour guide will explain and guide you through the highlights such as "Kamenose Landslide History Room," "Drainage Tunnel," and "Old Osaka Railway Kamenose Tunnel (Kamenose Tunnel Remains)" in detail.

For more information, scan here



No. 4 Yamatogawa River Railway Bridge



This railroad bridge was diverted and relocated to the left bank of the Yamatogawa River to avoid a landslide area. It features an unusual structure with the bridge built at an angle to the river and a girder bridge over a steel-framed truss.

24 Ryuosha Shrine



The shrine was enshrined at the landing place of the Kensaki-bune, a boat that used to ply the Yamatogawa River in the Edo period. Stone lanterns dedicated by people related to the Kensaki-bune still remain in the shrine grounds.